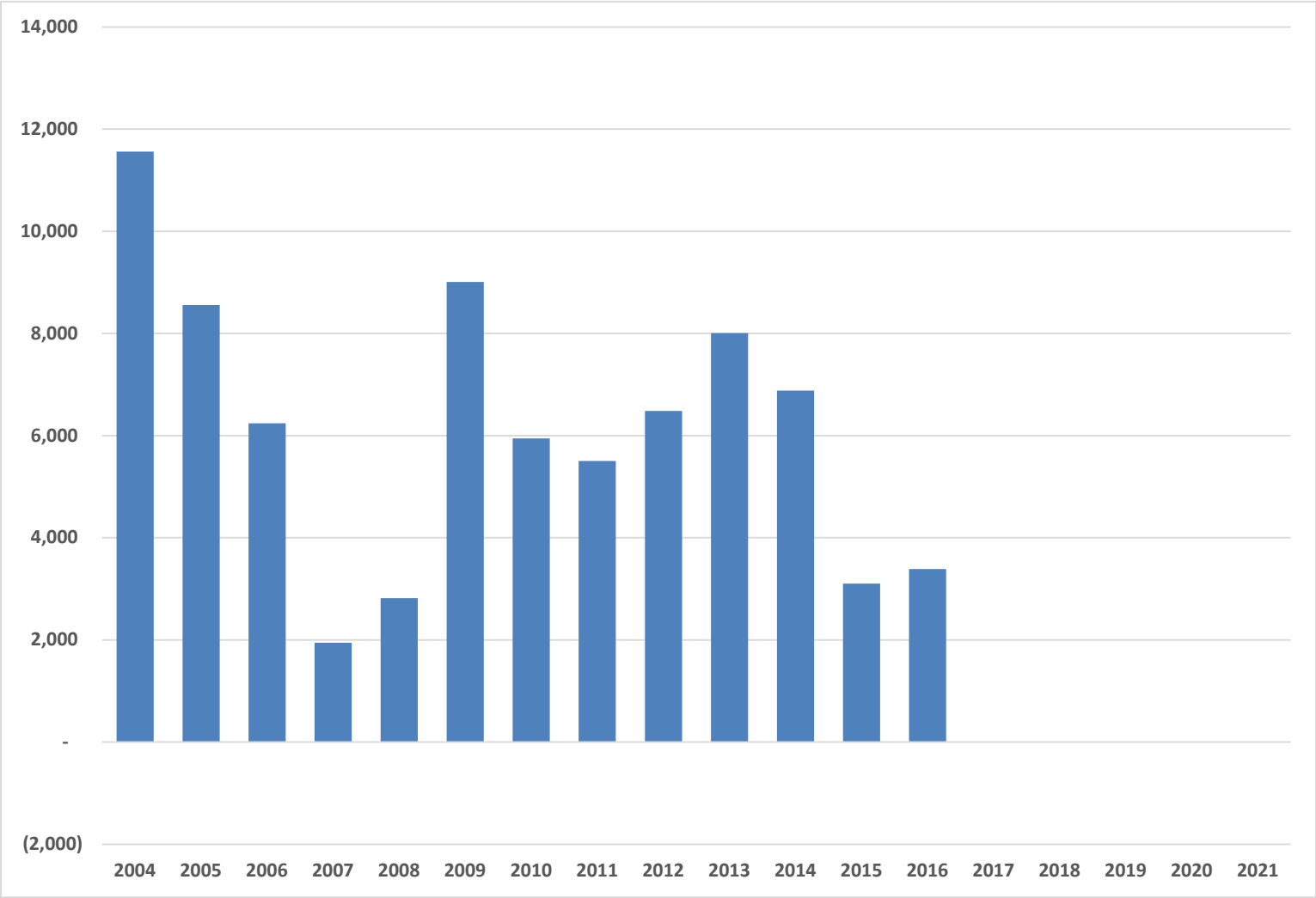


Virginia Public School Enrollment Trends

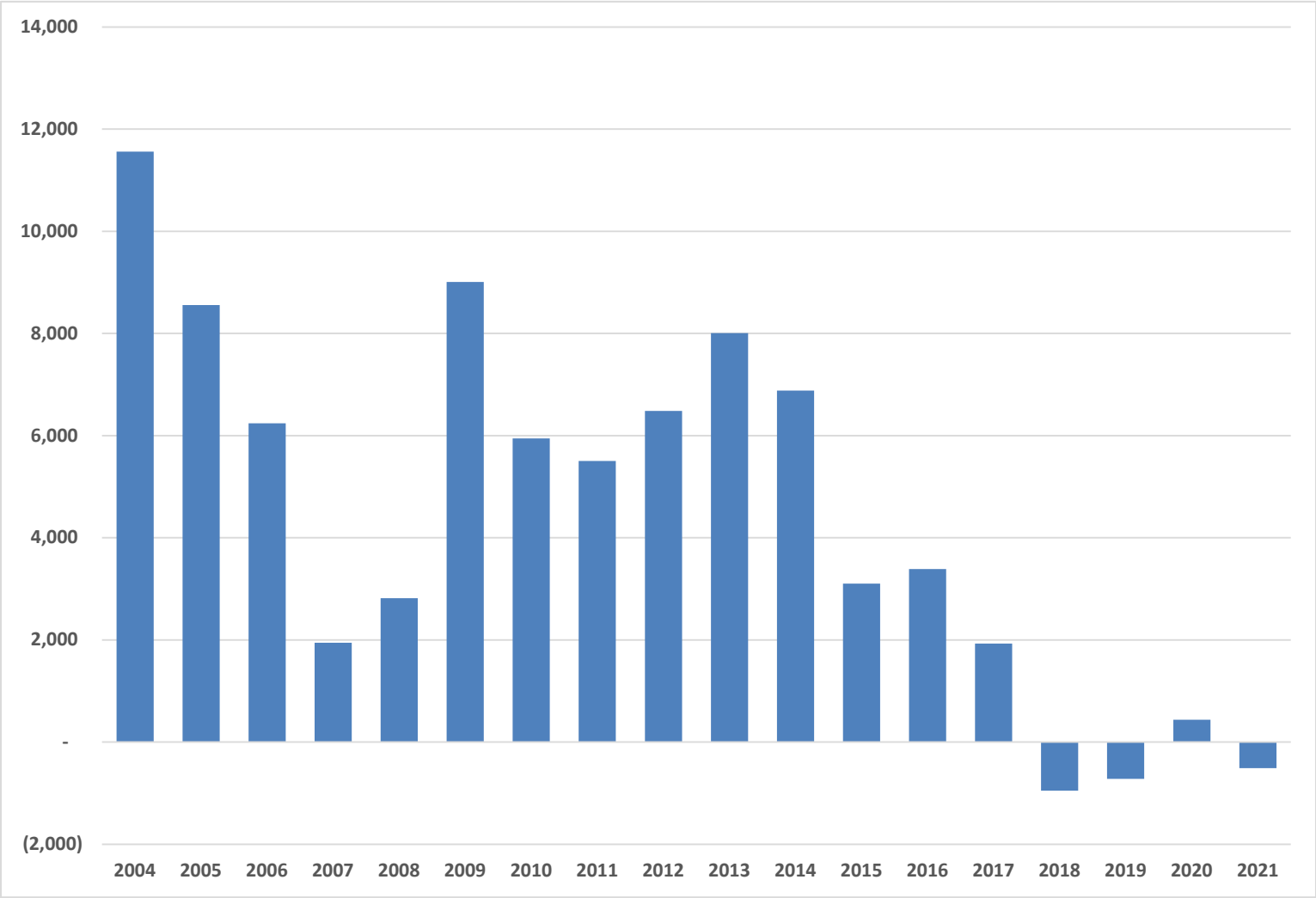
Hamilton Lombard

Weldon Cooper Center for Public Service
Demographics Research Group

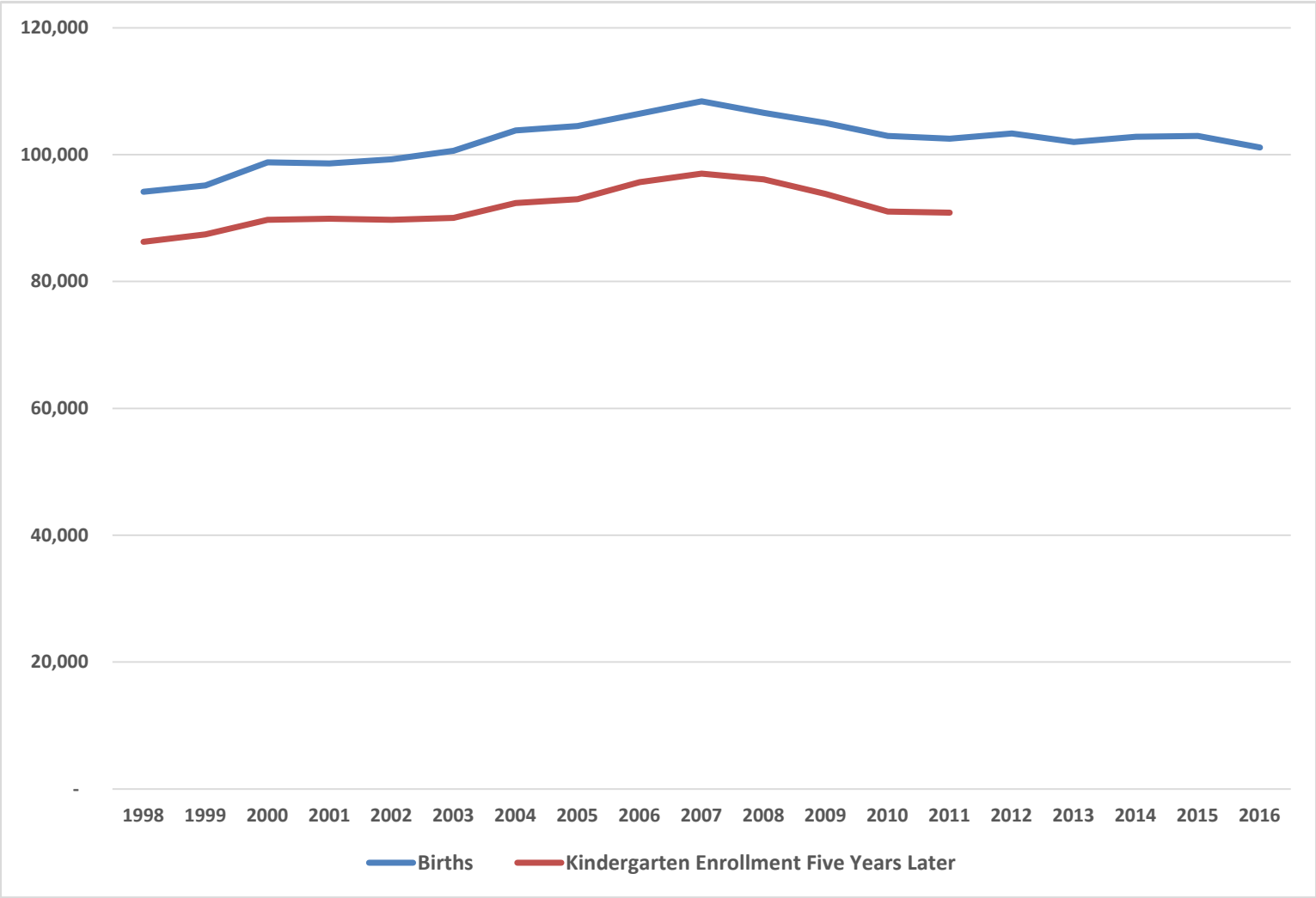
Virginia K-12 Enrollment Change



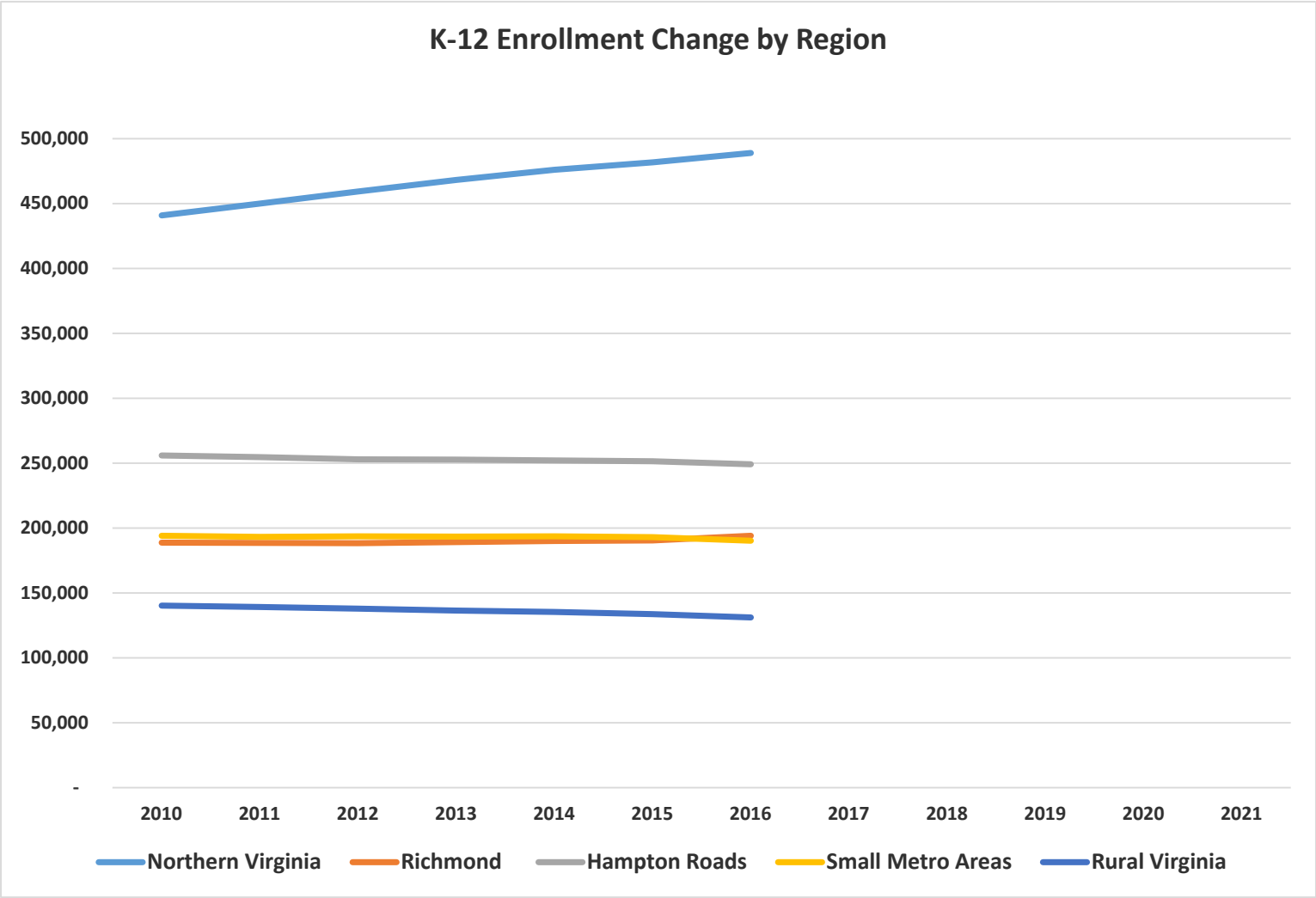
Virginia K-12 Enrollment Change and Projection



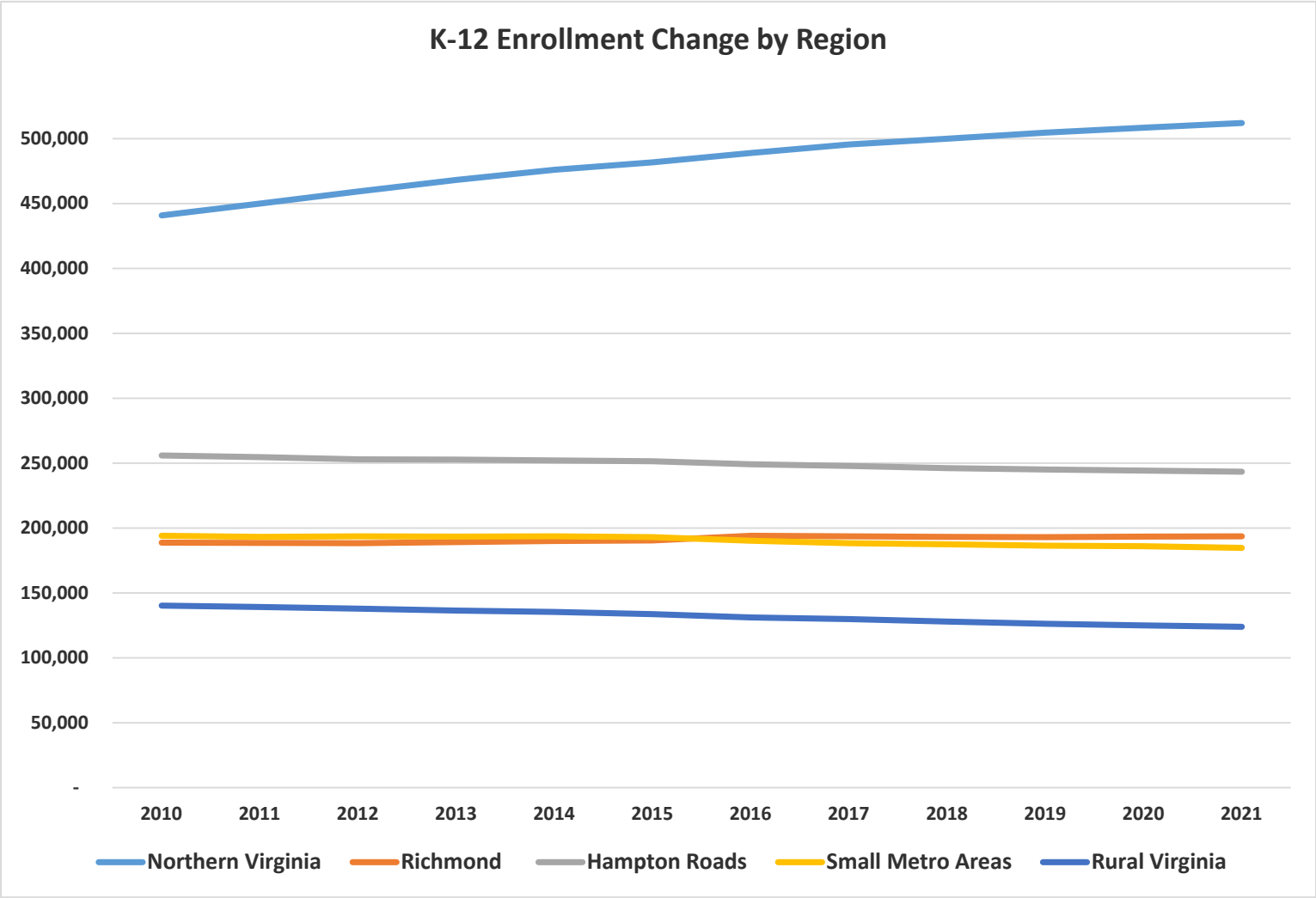
Virginia Births and Kindergarten Enrollment



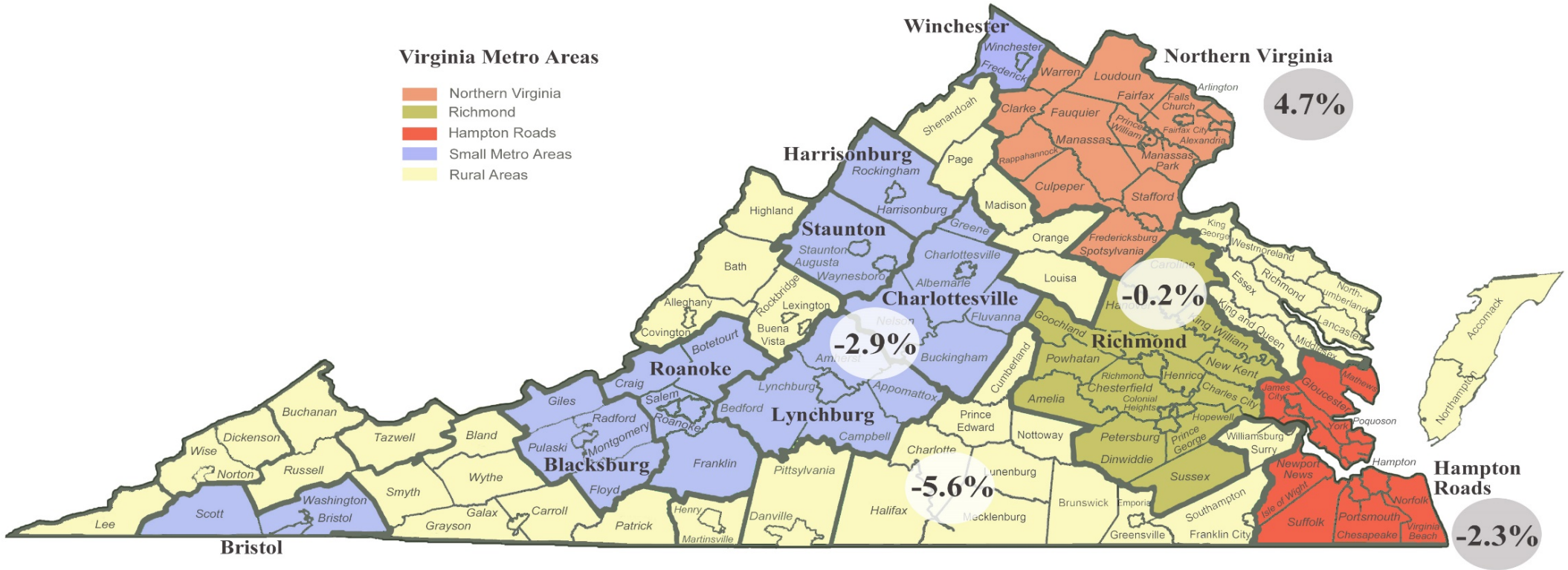
K-12 Enrollment Change by Region



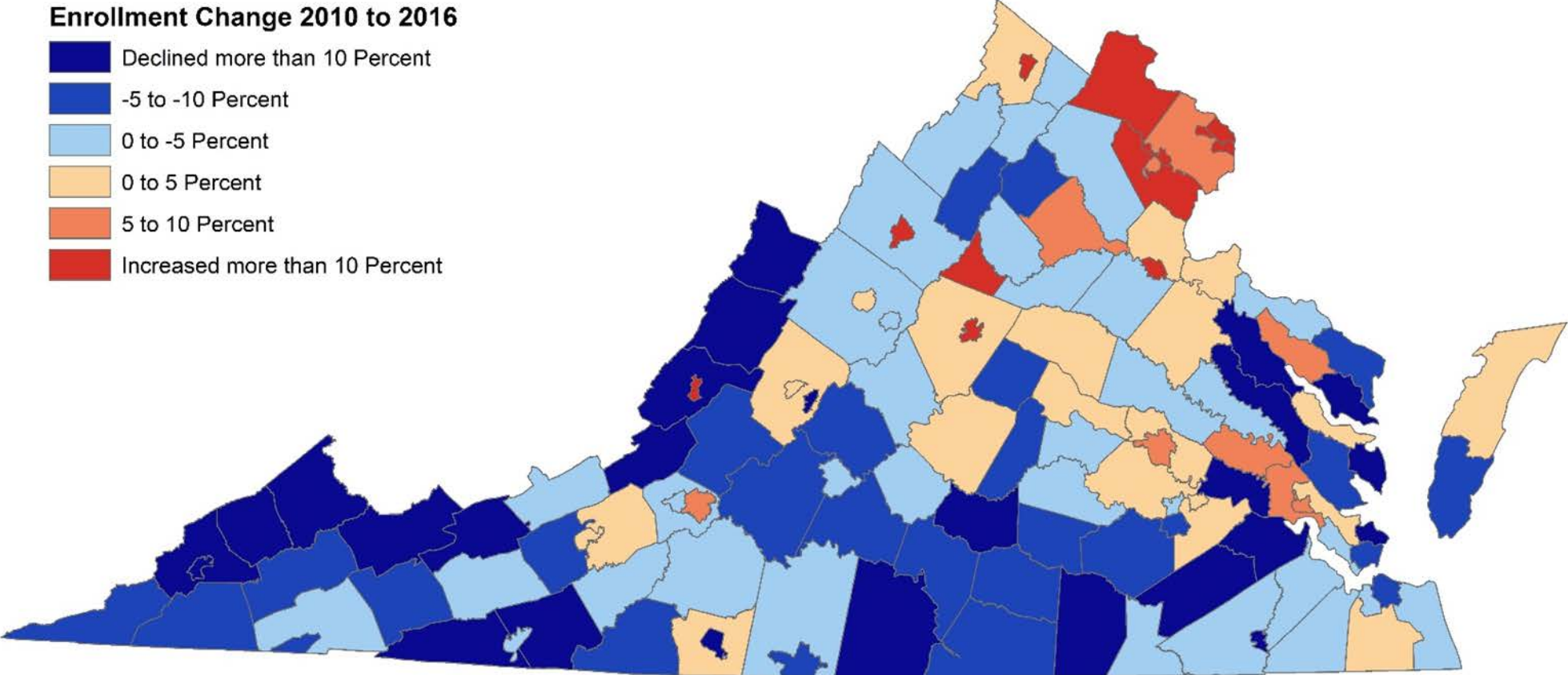
Projected K-12 Enrollment Change by Region



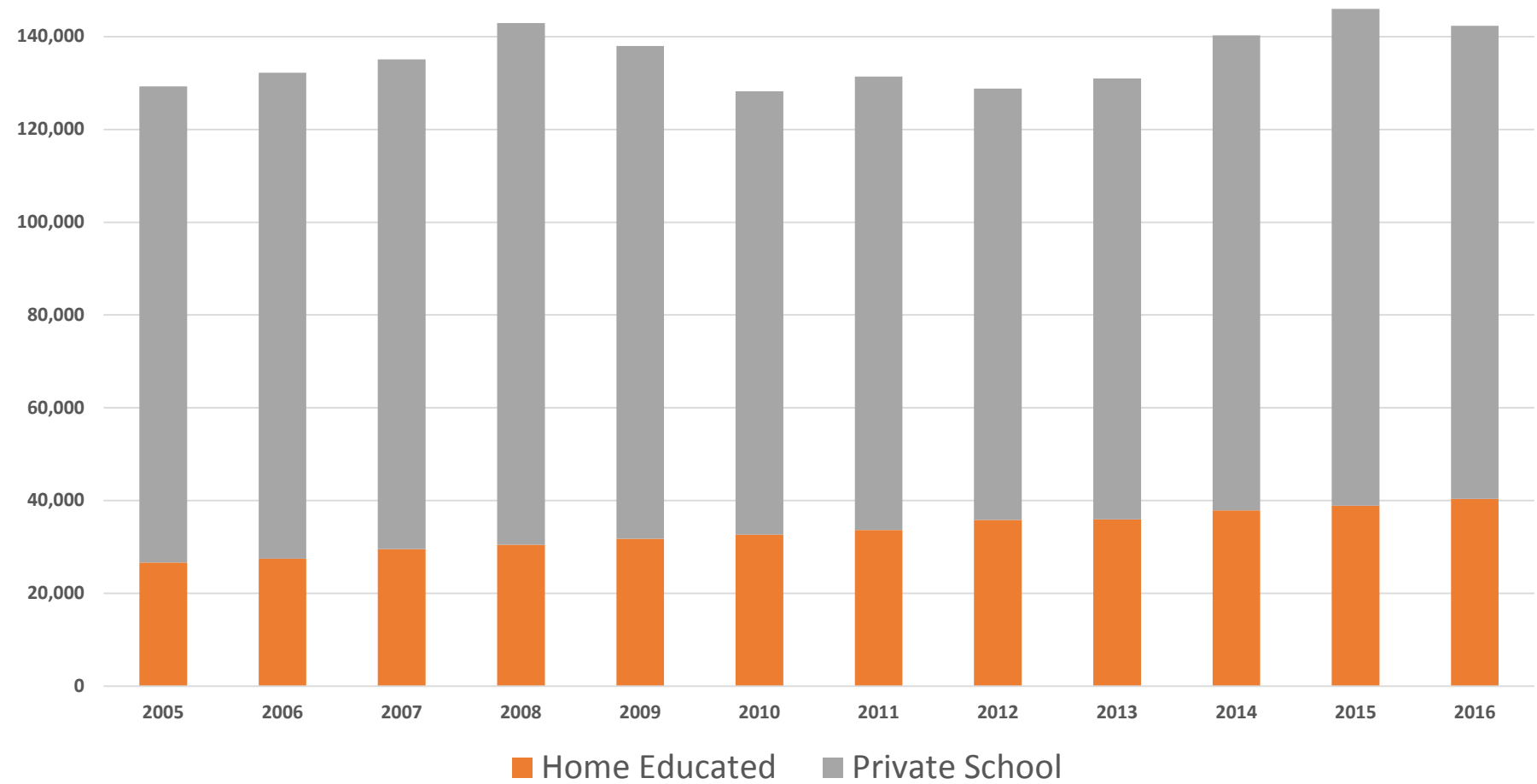
Projected K-12 Enrollment Change 2016 to 2021



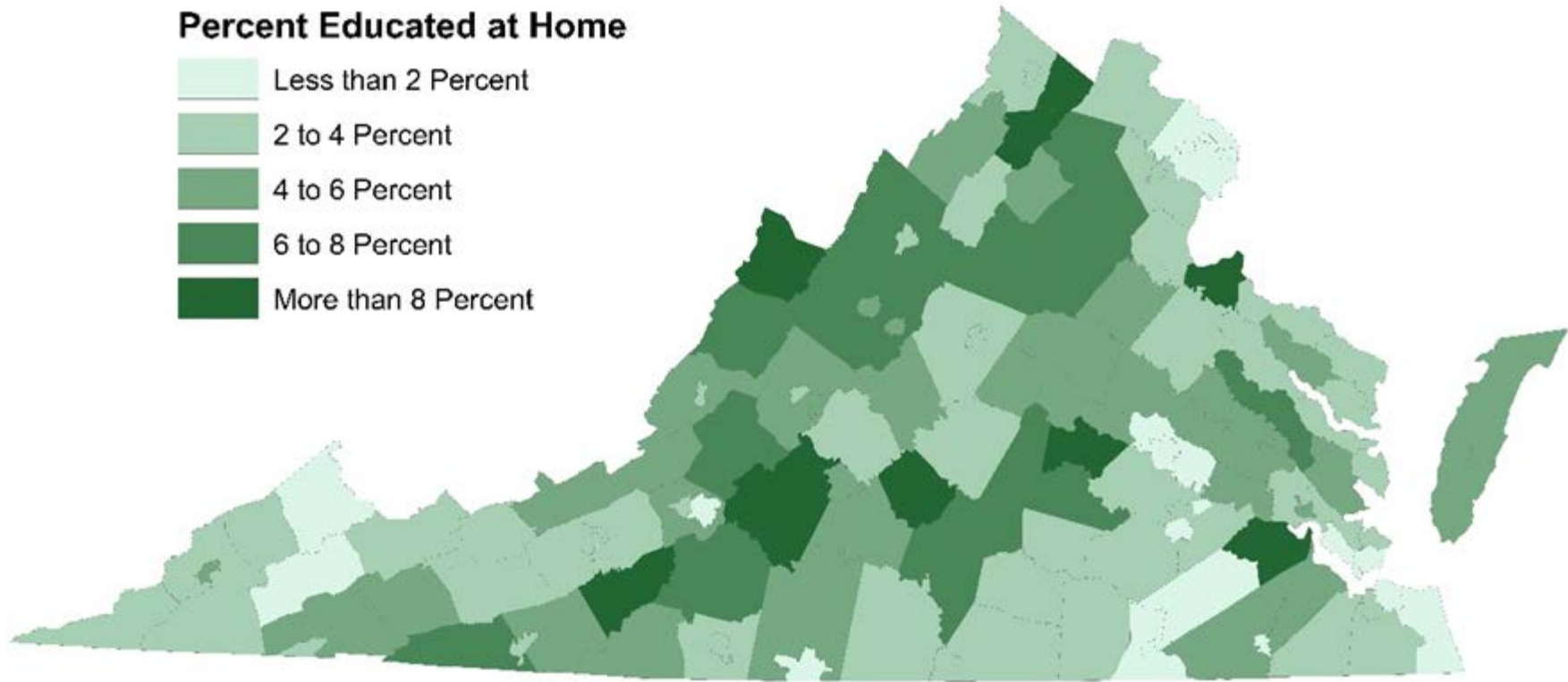
K-12 Enrollment Change 2010 to 2016



Virginia Privately Educated K-12 Student Enrollment



Home Educated Student Distribution in 2016



Composite Index Calculation of Local Ability to Pay

Average Daily Membership (ADM) Component =

$$.5 \left[\frac{\text{Local True Values}}{\text{Local ADM}} \right] + .4 \left[\frac{\text{Local Adjusted Gross Income}}{\text{Local ADM}} \right] + .1 \left[\frac{\text{Local Taxable Retail Sales}}{\text{Local ADM}} \right]$$

$$\frac{\text{State True Values}}{\text{State ADM}} \quad \frac{\text{State Adjusted Gross Income}}{\text{State ADM}} \quad \frac{\text{State Taxable Retail Sales}}{\text{State ADM}}$$

Population Component =

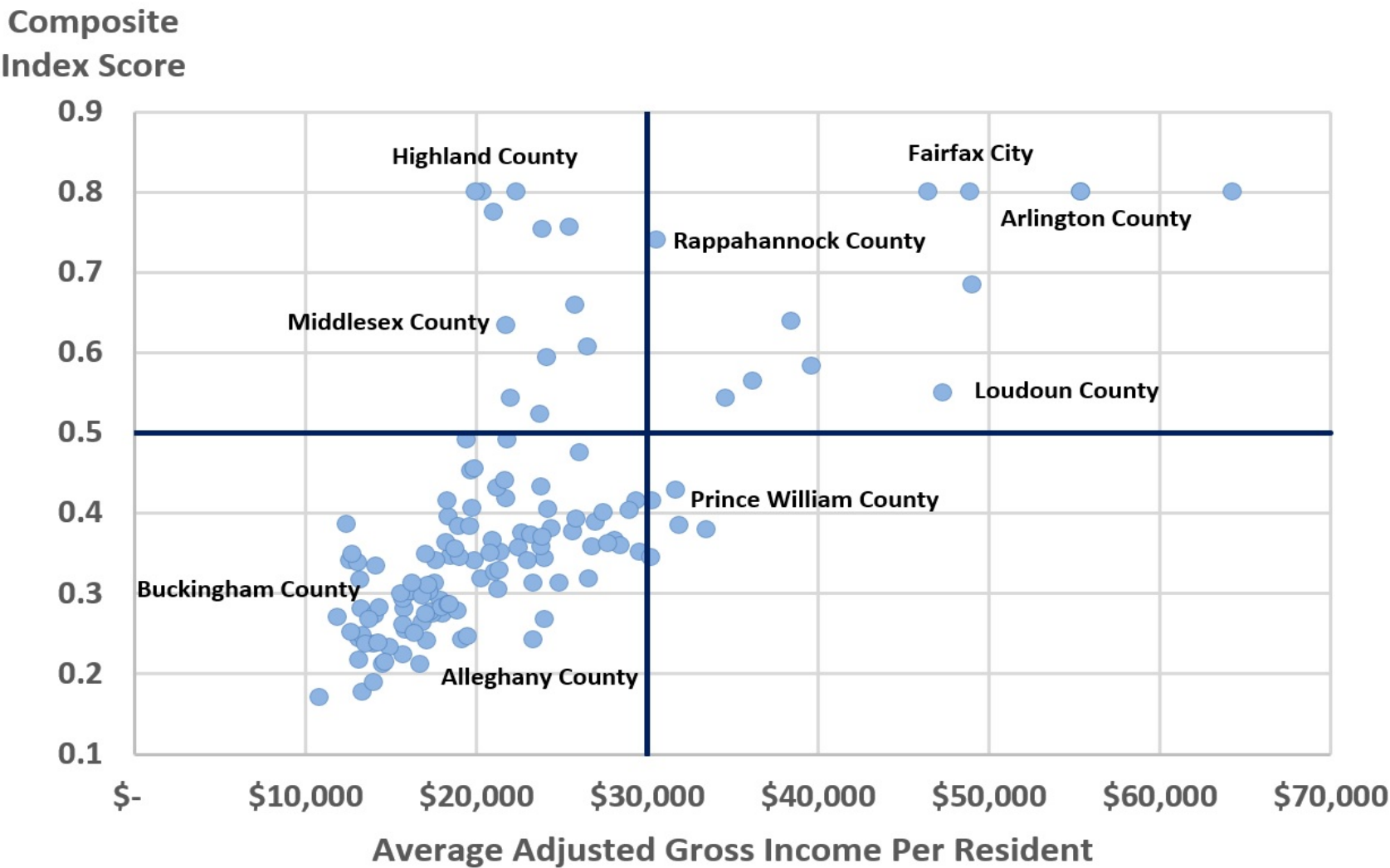
$$.5 \left[\frac{\text{Local True Values}}{\text{Local Population}} \right] + .4 \left[\frac{\text{Local Adjusted Gross Income}}{\text{Local Population}} \right] + .1 \left[\frac{\text{Local Taxable Retail Sales}}{\text{Local Population}} \right]$$

$$\frac{\text{State True Values}}{\text{State Population}} \quad \frac{\text{State Adjusted Gross Income}}{\text{State Population}} \quad \frac{\text{State Taxable Retail Sales}}{\text{State Population}}$$

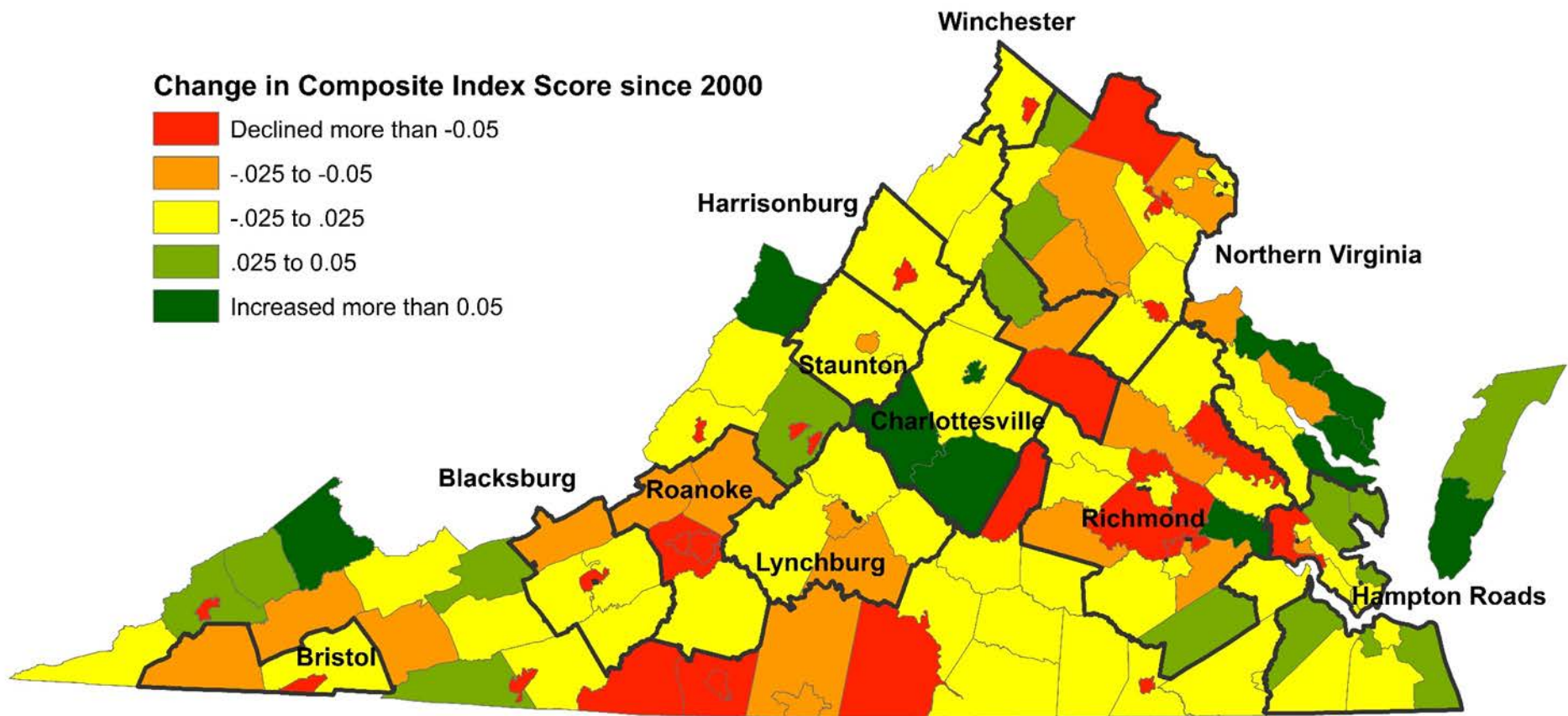
Final Composite Index =

$$((.6667 \times \text{ADM Component}) + (.3333 \times \text{Population Component})) \times 0.45$$

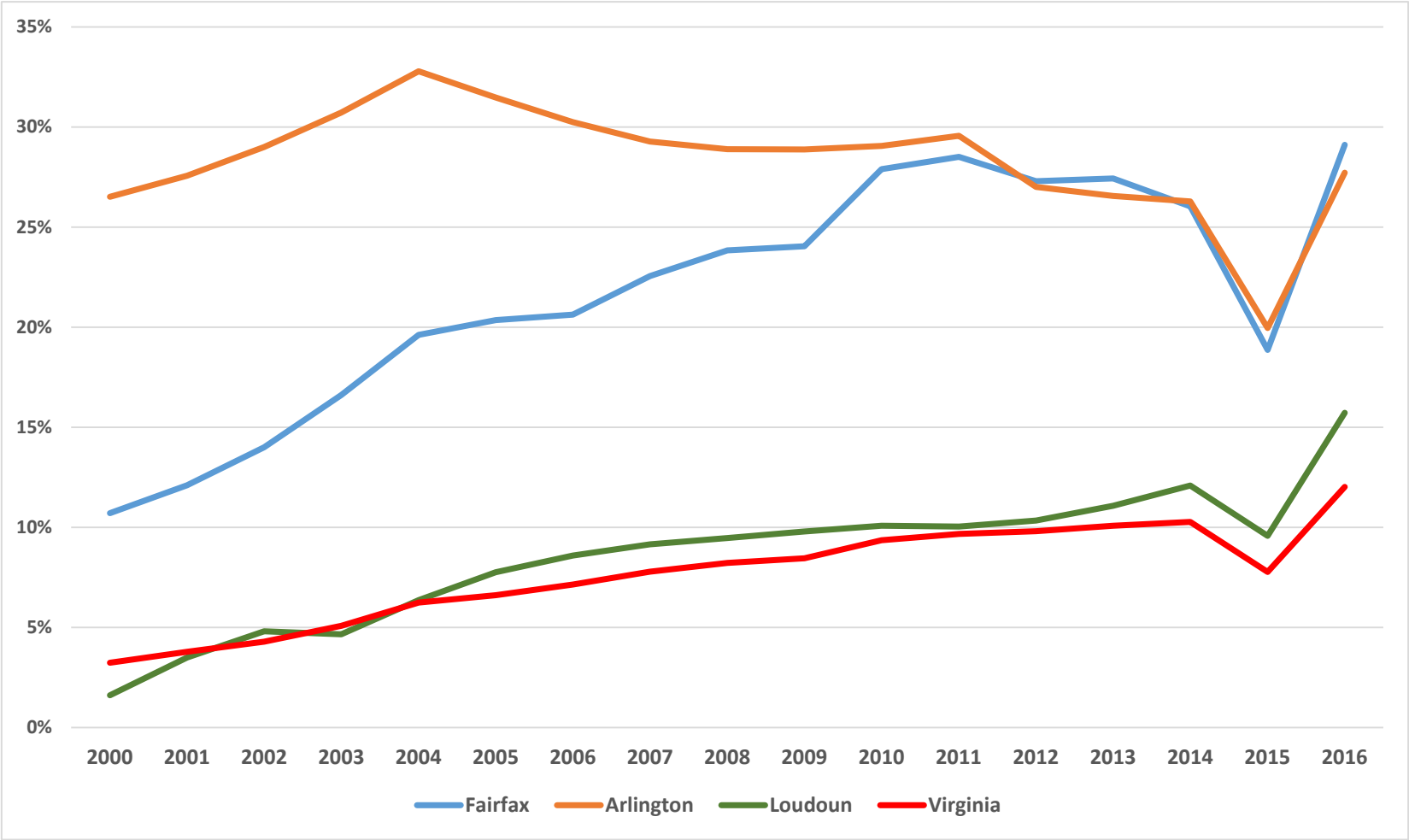
2016-2018 Composite Index of Local Ability to Pay



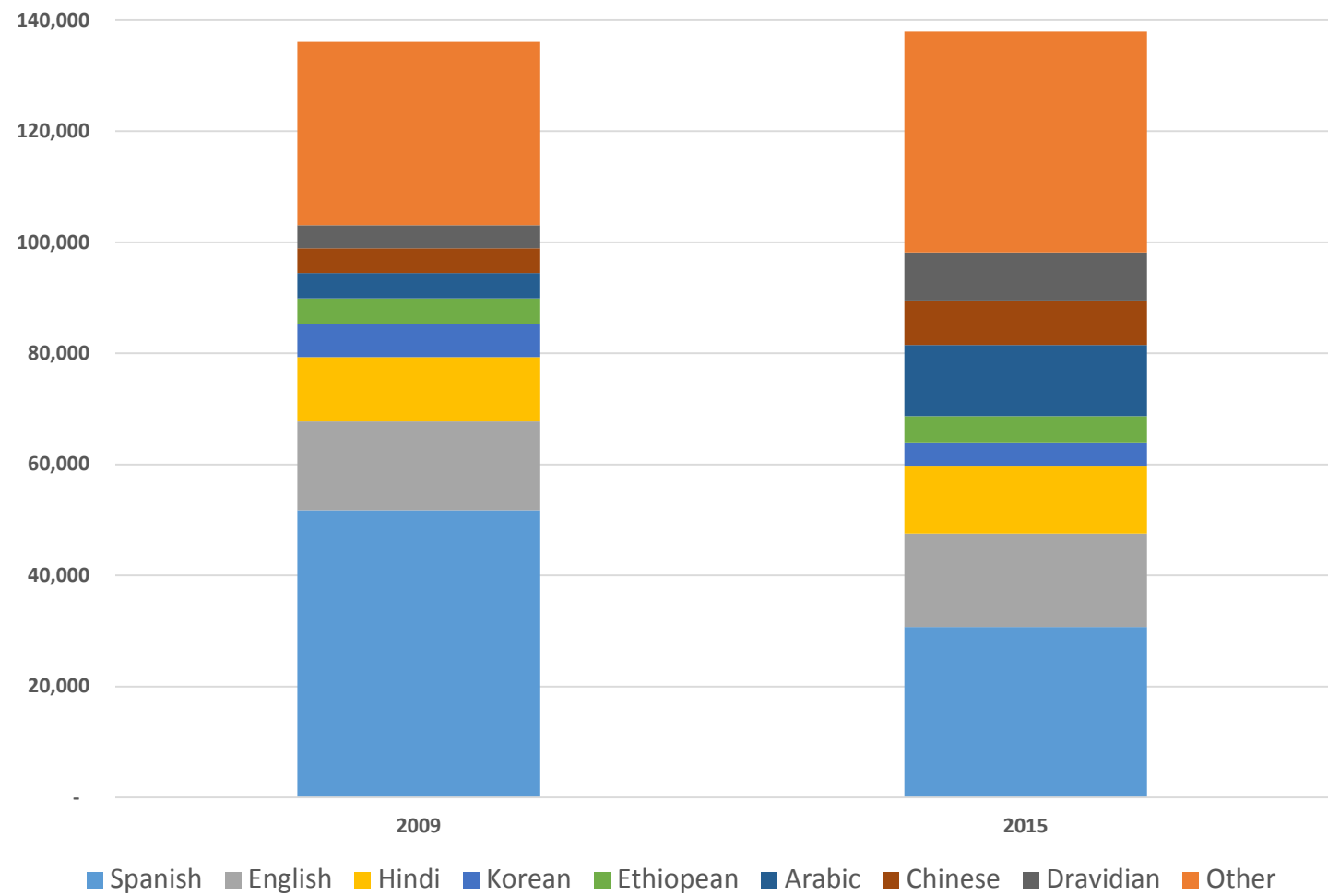
Change in Composite Index Score Since 2000



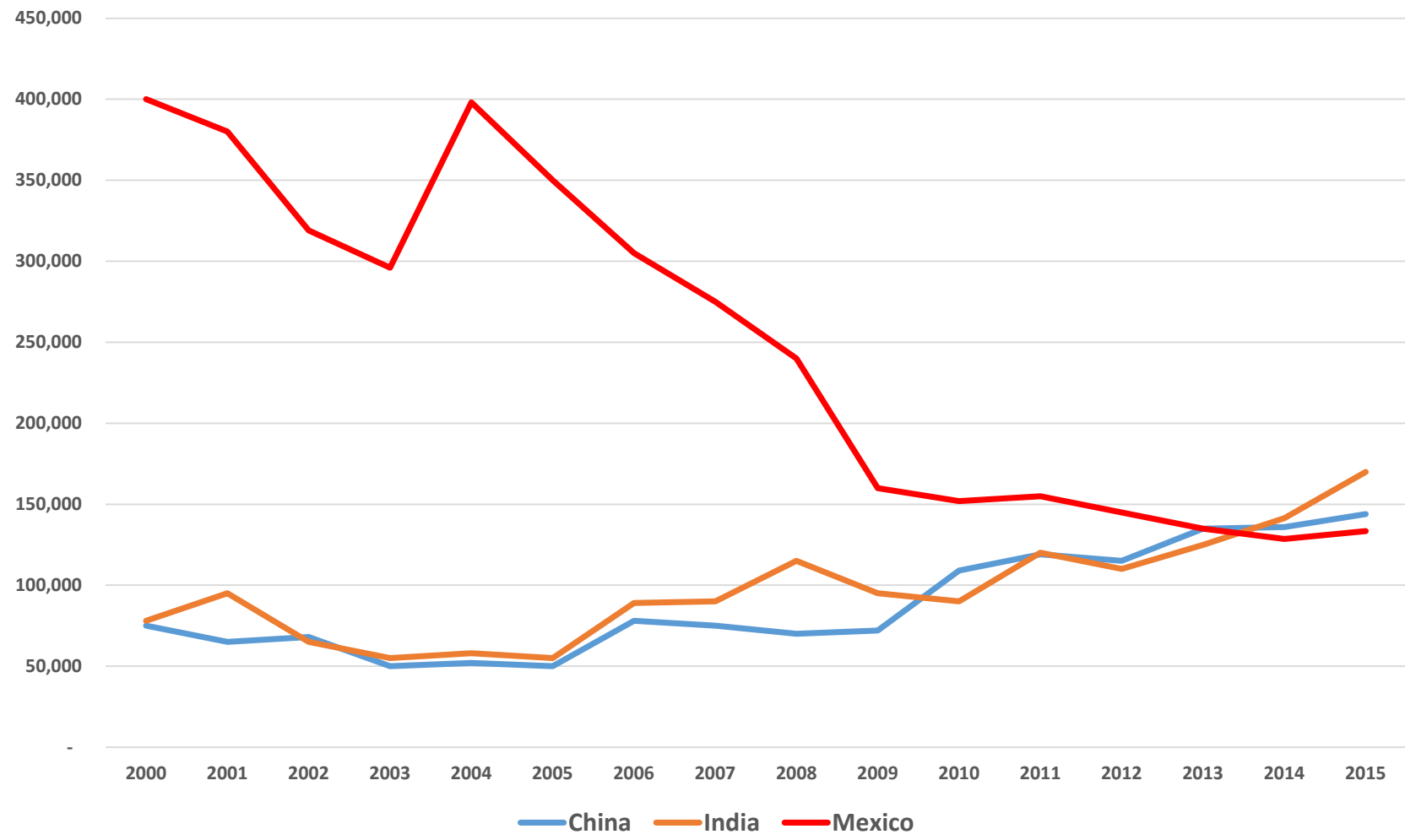
Percent of K-12 Enrollment with Limited English Proficiency



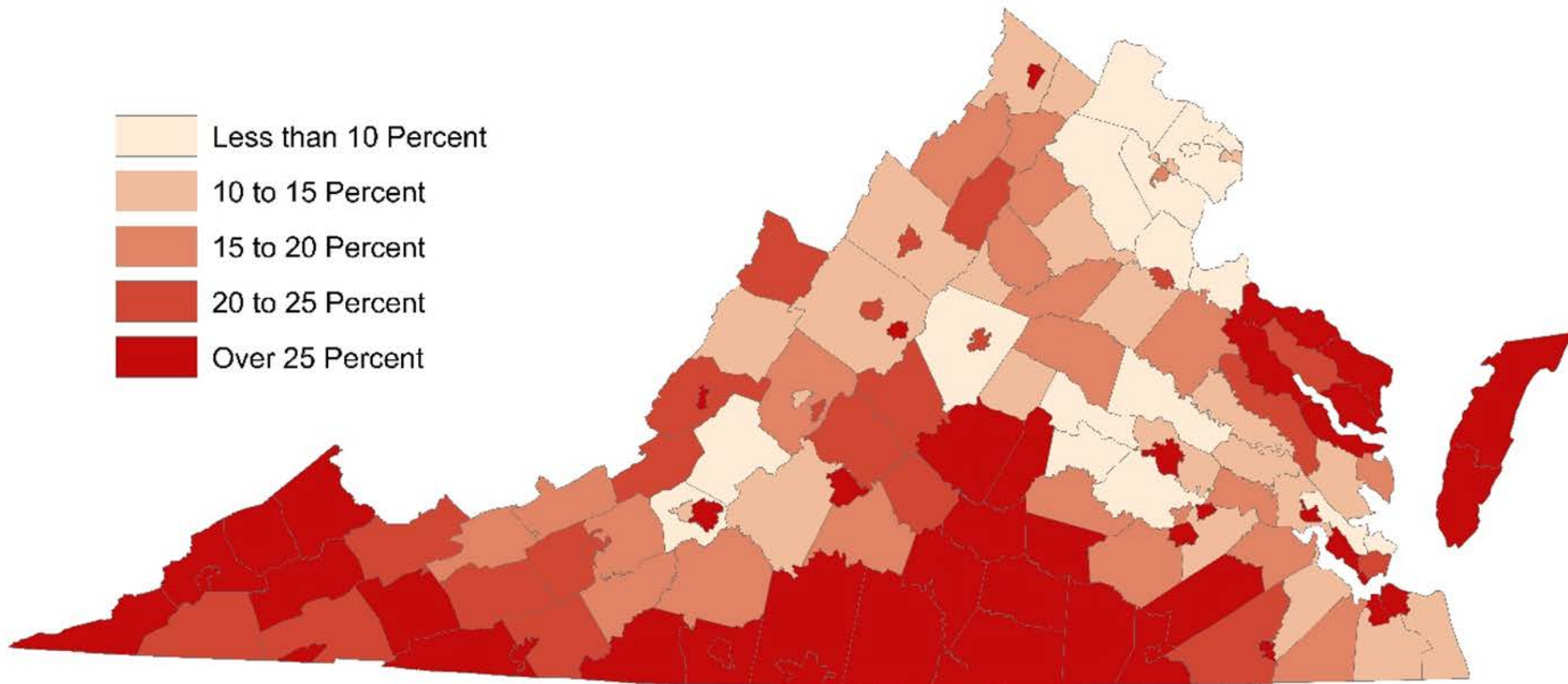
Languages Spoken at Home Among Recent Immigrants to Virginia



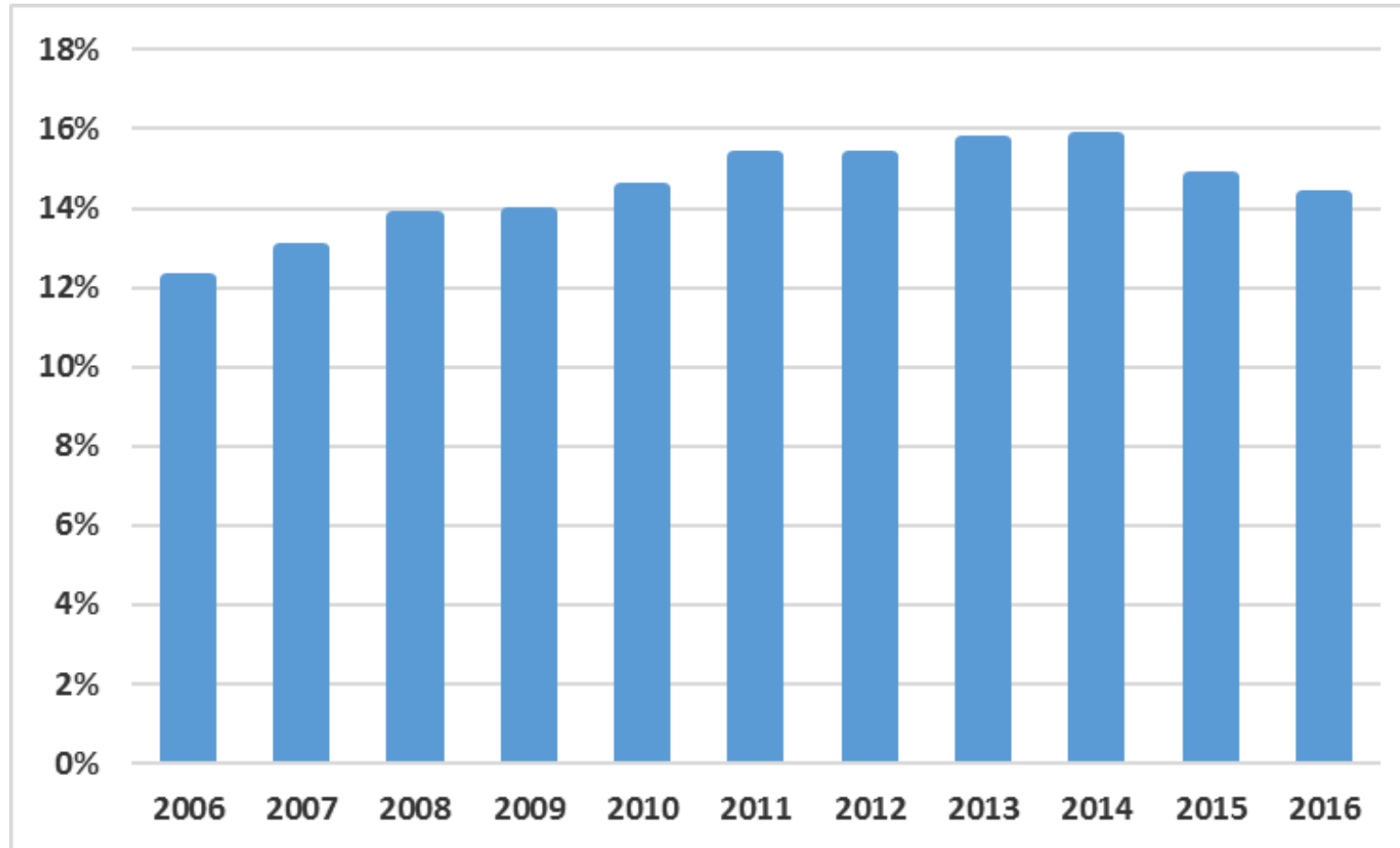
Annual Foreign-Born Migration to the U.S



Percent of Children Living in Poverty in 2015



Virginia Child Poverty Rate



Contact Information

Hamilton Lombard

hamilton.lombard@virginia.edu

www.demographics.coopercenter.org